

MMWA's Paint ReNew Program



The Mid Michigan Waste Authority **Paint ReNew** program offers 9 locations to Saginaw County residents for drop-off of unwanted latex and oil-based paints. Paint will be accepted at **Paint ReNew** locations when these guidelines are followed:

- ◆ All paint must be in original containers.
- ◆ Latex paint containers must be at least half full. See the preparation guidelines in this brochure for proper disposal with the regular trash.
- ◆ No solvents, stains, rust preventative paint, aerosol cans of paint, or automotive paints are accepted. See the section on "Non-Paint Products" in this brochure for proper handling.
- ◆ Only residential paint is accepted - no paint from businesses or contractors.

Paint ReNew locations

| | |
|---------------------------------------------------------------------------------------|------------------------------------------------|
| Ace Hardware Chesaning 207 W. Broad St. Chesaning | M-F 8-6:30 Sat 8-5, Su 10-2 989-845-2030 |
| Carrollton Twp office 1645 Mapleridge | M-F 8-3 989-754-8076 |
| Carrollton Hardware 3420 Carrollton Rd Carrollton | M-F 8-5:30 Sat 8-3 989-753-9661 |
| Gewirtz Hardware 144 W. Broad St. Chesaning | M-F 8-6 Sat 8-5 989-845-3765 |
| Habitat ReStore Saginaw 2121 S. Michigan Ave. Saginaw | M-F 8-4 Sat 8-2 989-791-4598 |
| Hemlock Ace Hardware 216 W. Saginaw Hemlock | M-F 8-7 Sat 8-6; Su 10-4 989-642-2314 |
| Merrill Hardware 123 N. Midland St. Merrill | M-Sat 8-6 Su 10-3 989-643-5566 |
| St. Charles Community Hardware 147 S. Saginaw St. Village of St. Charles | M-F 8-6; Sat 8-5 Su 10-4 989-865-9973 |
| St. Charles Village office Spruce Street, just west of M-52 | M-F 8-5 989-865-8287 |

MMWA Members

| | |
|-------------------------|------------------------|
| Albee Twp | James Twp |
| Bethany Twp | Jonesfield Twp |
| Birch Run Twp | Kochville Twp |
| Village of Birch Run | Lakefield Twp |
| Blumfield Twp | Maple Grove Twp |
| Brady Twp | Marion Twp |
| Brant Twp | Village of Merrill |
| Village of Breckenridge | Richland Twp |
| Bridgeport Twp | City of Saginaw |
| Buena Vista Twp | Saginaw Twp |
| Carrollton Twp | St. Charles Twp |
| Chapin Twp | Village of St. Charles |
| Village of Chesaning | Spaulding Twp |
| Chesaning Twp | Swan Creek Twp |
| City of Frankenmuth | Thomas Twp |
| Frankenmuth Twp | Tittabawassee Twp |
| Fremont Twp | City of Zilwaukee |

Tips for Handling Unwanted Household Paint Materials

- ◆ Buy only the quantities you need
- ◆ Keep products in their original containers
- ◆ Store products according to label directions
- ◆ Avoid skin contact and vapors
- ◆ NEVER mix different products.
- ◆ If products exceed your needs, ask friends, neighbors, or charitable organizations if they want them
- ◆ Always dispose of products in the approved manner, or take them to a household hazardous waste collection

For more information, contact:

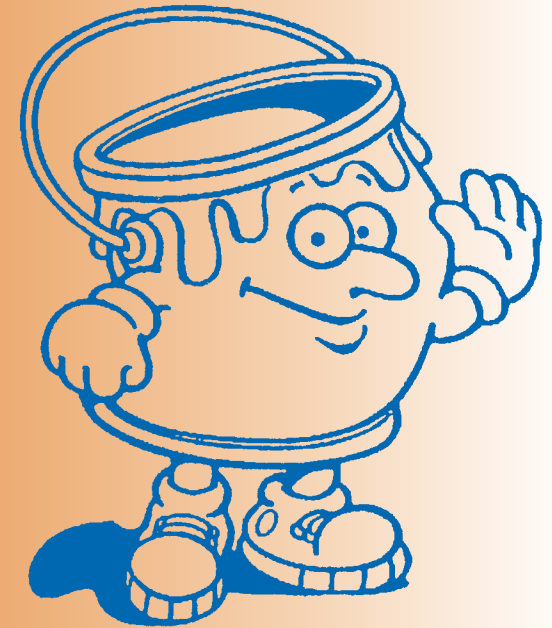


Mid Michigan Waste Authority

7950 Gratiot, Suite 5
Saginaw MI 48609
989-781-9555
fax: 989-781-9559
www.mmwa1991.org

Printed on recycled paper

Mid Michigan Waste Authority's Household Paint * Handling Guide

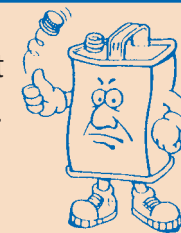


Tips on Handling Leftover Paint

* Look inside for details on MMWA's Paint ReNew drop-off program with locations across Saginaw County

So You Have Leftover Paint?

Paint comes in latex and oil-based formulas that each have different disposal methods. Painting can also generate other related, hard-to-dispose of items such as paint thinners and solvents. These related products are household hazardous waste (HHW) and should be handled and disposed of with special care. In this brochure, you will learn a variety of methods for handling these materials.



What Can You Do With Usable Unwanted Paint?

- ◆ Give away useful quantities of leftover paint to family, friends and neighbors.
- ◆ Donate it for reuse by local churches, animal shelters, housing authorities and theater groups.
- ◆ Saginaw Habitat for Humanity operates ReStore Saginaw, where they collect and resell usable paint and a wide variety of other home remodeling items at a reduced rate. Call 989-791-4598 to donate or purchase paint.

What About Unusable Latex Paint?

Latex paint can be made safe for disposal through your regular trash program by following these do-it-yourself tips.

1. Make the liquid paint into a solid before placing it in the trash. Use one of these methods:
 - ◆ **Dry It Up** This method works best with paint cans with less than 2 inches of paint in the bottom. Remove lids and place open cans in a well-ventilated area, away from children and pets until dried.
 - ◆ **Absorb It** Mix paint with an absorbent, such as shredded newspaper, cat litter or commercial products intended to solidify or clean up oil spills. Allow absorbent to dry thoroughly.
2. After the paint is thoroughly dry, leave the lid off the can and set it out with the regular trash.
3. To recycle empty paint cans, wipe the dried paint out of the can and lid. Place both in your mixed container recycling bin.

What About Oil-Based Paints?

Handle oil-based paints with great care. They are ignitable and have potentially harmful fumes; follow label instructions for use and disposal.



When solidified, oil-based paints can be safely disposed of with the regular trash. Follow these do-it-yourself tips:

1. Evaporate volatile components first. Remove lids and place open cans in a well-ventilated area, away from children and pets.
2. Absorb it. Mix paint with an absorbent, such as shredded newspaper, cat litter or other absorbent. Allow absorbent to dry thoroughly.
3. After the paint is thoroughly dry, leave the lid off the can and set out the solidified paint with the regular trash.
4. Use up small amounts. Apply leftover paint to scrap lumber or cardboard. Keep children and pets away while the paint is drying. Place the scrap lumber or cardboard in the regular trash according to trash guidelines.

The Next Time You Paint:

- ◆ To avoid the need to dispose of leftover paint, properly measure your project area.
- ◆ Get help from your local paint retailer to determine the proper paint quantity for the job or do-it-yourself with the help of a paint calculator from an Internet paint site.

How About Non-Paint Products Like Solvents and Stains?

"Recycle" used solvents by allowing the paint pigments to settle to the bottom of the can. Pour the clarified liquid into another labeled container for reuse. To properly handle the remaining solvent and paint sludge, follow the steps in the "What About Oil-Based Paints?" section.

If you're unable to use or donate leftover solvents, thinners or stains, store it safely until you can take it to a household hazardous waste (HHW) collection event.



The Mid Michigan Waste Authority (MMWA) holds free HHW collection events each year for Saginaw County residents. Call MMWA at 989-781-9555 or check the website at www.mmwa1991.org for collection dates.

The Saginaw County Health Department also conducts HHW collection events by appointment only. For event dates and an appointment call 989-758-3686.



Remember, never pour paint, paint thinners, turpentine, mineral spirits or any other solvents down a drain or sewer or dump them on land or in a waterway.