



# Saginaw Area Solid Waste Management Authority

ESTABLISHED IN 1991

- Services started in 1995
- Started with two zones
  - Collection agreement
  - Landfill agreement
  - Recyclables processor
  - Composting provider

## Original Member Communities





# Saginaw Area Solid Waste Management Authority

**MMWA FOUNDING CHAIRMAN GERALD FRANCIS  
1991-2005**

**POSTHUMOUSLY NAMED CHAIRMAN EMERITUS**

## Joining In

- 1996 Jonesfield Twp, Maple Grove Twp
- 1997 Chesaning Twp, Frankenmuth Twp, James Twp, Lakefield Twp, St. Charles Twp, Swan Creek Twp
- 1998 Village of Birch Run, Blumfield Twp, Fremont Twp, Richland Twp
- 1999 Albee Twp, Birch Run Twp, Brady Twp
- 2001 Chapin Twp

*Martin Seamon  
Pam Trimble*

**Monica Duebbert hired as SASWMA  
General Manager in 2001**



## ADVANTAGES OF MEMBERSHIP

- Long term contracts help keep costs lower as vendors have assured material stream and revenue
- Members can build multi-year budgets
- HSW programs that are expensive to offer in individual communities



## Mid Michigan Waste Authority

**REBRANDED AS THE MID MICHIGAN WASTE AUTHORITY. A REGIONAL COLLABORATIVE ENTITY FORMED TO PROVIDE COMPREHENSIVE, COST EFFECTIVE, ENVIRONMENTALLY RESPONSIBLE SOLID WASTE SERVICES TO ITS MEMBER COMMUNITIES.**





# Mid Michigan Waste Authority

JOHN MALZAHN CHAIR FROM 2006-2011

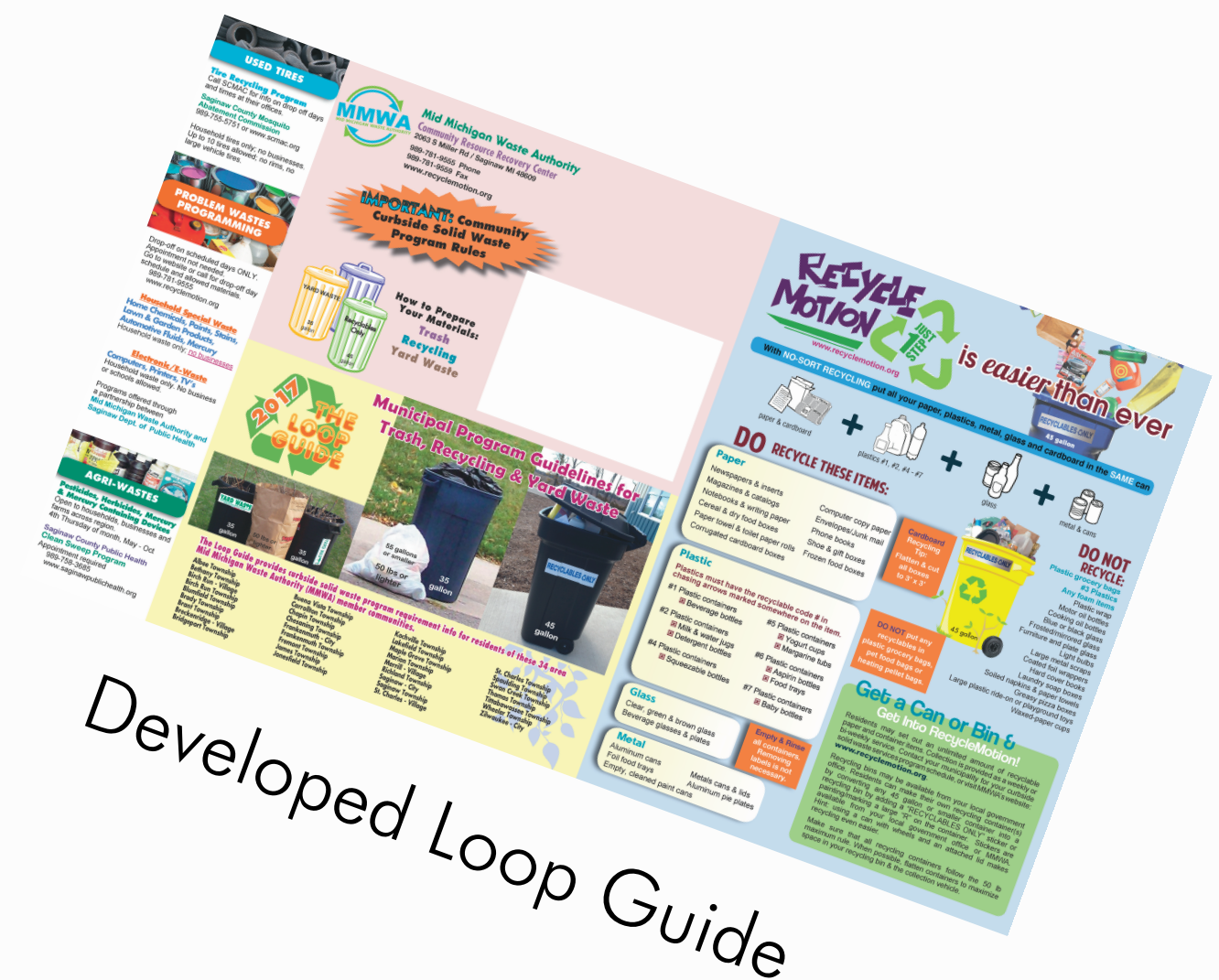
SUE EMMENFORFER CHAIR FROM 2011-2012

## Joining In

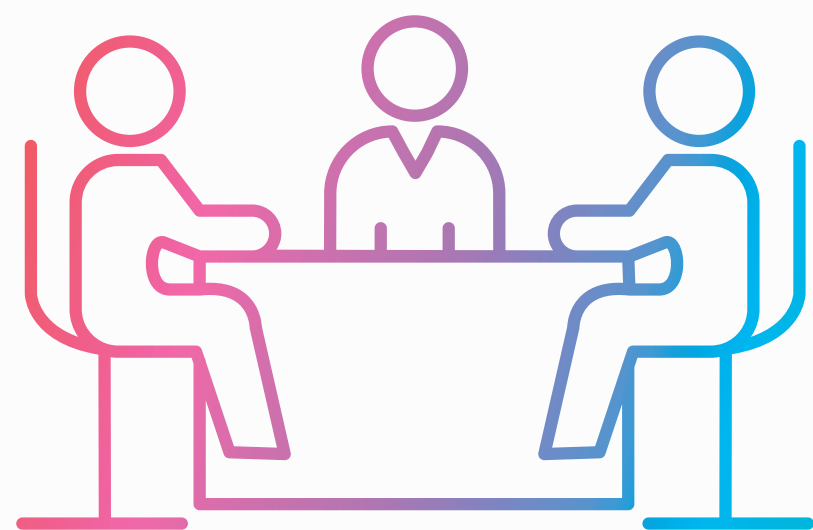
- 2002 Village of Merrill
- 2003 Village of Chesaning
- 2004 Village of Breckenridge, Marion Twp
- 2005 Bethany Twp
- 2006 Brant Twp

## Services

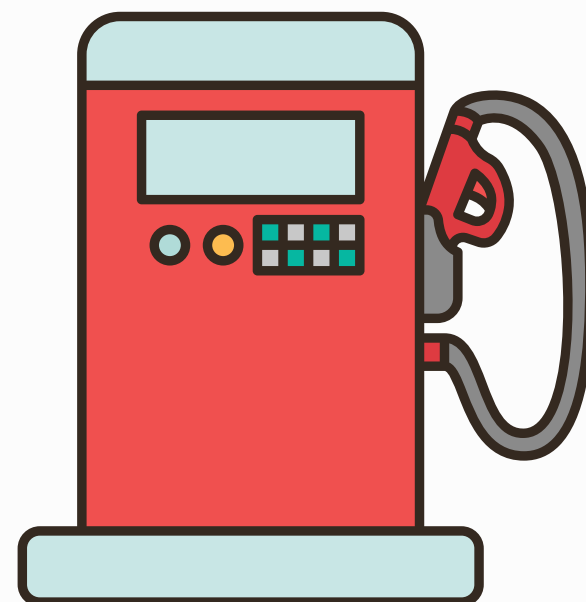
- Weekly unlimited trash
- Two items per week bulk
- Member communities can select from unlimited weekly or biweekly recycling and unlimited yard waste



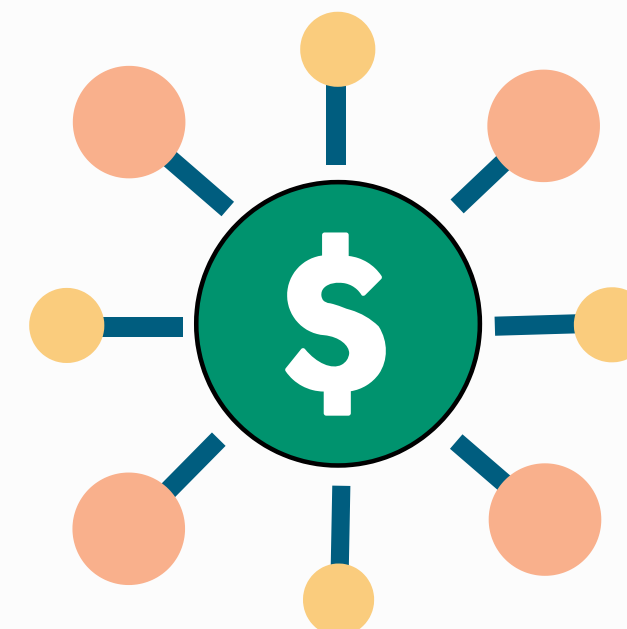
Developed Loop Guide



Monthly Exec Meetings switched to every other month in 2011



2011 Fuel Supplement tied to recycling participation



SCSW Funding



City of Saginaw starts recycling April 2012



# RECYCLING EDUCATION PROGRAMS



**BAG & TIE  
SO YOUR TRASH  
WON'T FLY!**

Weather... happens. And no matter what the season, a day can turn windy without a moment's notice. While we can't control Mother Nature, here are some tips that can help prevent your trash and recycling from blowing away.

**Trash**  
The number one way to prevent blowing litter is to bag your trash. Bagging your household garbage prevents windblown litter while your container is curbside, as well as during the collection process.  
Use a can with a lid and make sure it is completely shut.  
Take your trash and recycling to the curb the morning of pick-up, rather than the evening before. This will reduce the amount of time your materials are exposed to windy conditions.

**Recycling**  
While you cannot use plastic bags in recycling bins or cans, there are some easy ways you can help reduce blowing litter.  
The new MMWA recycling program makes it even easier for residents to keep recyclables inside the can. Instead of using 18-gallon recycling bins, switch to a 45-gallon or smaller can with a lid. Because residents no longer need to sort their recycling, it just makes sense to use one large container. Make sure the can is labeled with "Recyclables Only" stickers that are available through your municipal office or MMWA. Call MMWA at (989) 781-9555 to order free stickers.  
It also helps to put heavier recyclables toward the top of the container to weigh down loose papers.

**HELP STOP BLOWING LITTER BEFORE IT STARTS**

**RECYCLABLES ONLY**

Find us on **facebook**

Mid Michigan Waste Authority • (989) 781-9555 • [www.recyclemotion.org](http://www.recyclemotion.org)

Mid Michigan Waste Authority  
**Paint ReNew**  
Household Paint Recycling Program

Give your old paint new life! Drop off oil-based and latex paint @ any Paint ReNew site for recycling.

**Who:** Saginaw County residents  
**What:** Paint ReNew recycling program  
**Where:** Ace Hardware 207 W. Broad St. / Oronsoning  
Carrollton Twp office 1045 Maple Ridge, off N. Michigan  
Carrollton Hardware 3480 Carrollton Rd  
Carter Lumber 8500 Grotius / Thomas Twp  
Gewirtz Hardware 144 W. Broad St. / Oronsoning  
Habitat ReStore Saginaw 2121 S. Michigan Ave. / Saginaw  
Hemlock Ace Hardware 216 W. Saginaw / Hemlock  
Mannion Brothers Hardware 5045 W. State St. / Saginaw Twp  
Merrill Hardware 125 N. Midland Rd / Merrill  
St. Charles Village office Spruce Street, just west of M-52

**When:** M-F 8-8:30; Sat 8-5; Sun 10-2  
M-F 8-3  
M-F 8-5:30; Sat 8-3  
M-F 8-5; Sat 7:30-4; Sun 9-3  
M-F 8-8; Sat 8-5  
M-F 8-4; Sat 8-2  
M-F 8-7; Sat 8-8; Sun 10-4  
M-F 8-8; Sat 8-8; Sun 10-5  
M-Sat 8-8; Su 10-3  
M-F 8-5

**How:** Get rid of latex and oil-based paint, for FREE!  
**Why:** RECYCLING gives used paint a new life!

For more information: Mid Michigan Waste Authority 989-781-9555

**Household Special Waste Drop-Off Days**

Residents of Saginaw County, Village of Breckenridge, Bethany and Wheeler Twp's

**Saturday: June 28**  
**August 23**  
**Arthur Hill High School**  
(Staff parking lot; North Mackinaw entrance)

**Acceptable Waste Items**

- Used Motor Oil
- Gasoline
- Anti-freeze
- Wiper Fluid
- Stain
- Varnish
- Paint Thinner
- Latex Paint
- Oil-Based Paint
- Rechargeable Batteries
- Lead-Acid Batteries
- Smoke Detectors
- Fluorescent Bulbs
- Pesticides
- Lawn Chemicals
- Hobby Chemicals
- Pool Chemicals
- Asphalt & Roofing Tar
- Lead
- Mercury
- Kerosene
- Degreasers
- Glues/Adhesives
- Metal Cleaners
- Acids
- Dyes

**Do NOT Bring:** Business/Farm Wastes, Explosives, Ammunition, Tires, Asbestos

**Drop-Off Day Rules:**

- Proof of residency
- Residents only - NO businesses/farms
- No containers over 5 gal size; NO barrels
- Containers not returned

**FREE!** Saturday Only: Rain or Shine!

For more information, call: Mid Michigan Waste Authority 989-781-9555

**Recycling - It's a 2-STEP!**  
Make it even easier, and use 2 bins!

**Step 1. All Paper Items:** Paper, Cardboard & Boxboard  
Place all paper items directly in 1 recycling bin if using 2 bins  
Place in paper grocery sack in recycling bin

**Step 2. Commingled Containers:** Plastics, Glass & Metals  
Place all commingled containers directly in recycling bin(s)

You don't need 2 official recycling bins to recycle the 2-STEP way. Just follow the 2 steps to using 2 bins!

- Use at least one official recycling bin for either your paper or commingled containers.
- Get a free "Recyclables Only" sticker from your town office, place it on any 33 gallon or smaller container, and it's now a second (or third) recycling bin!

**RECYCLABLES ONLY**

For more information on Recycling - 2-STEP, how to get a recycling bin, Recyclables Only stickers, and other solid waste issues, contact your municipality or the Mid Michigan Waste Authority at 989-781-9555 or [www.mmwa.org](http://www.mmwa.org)

Are you disposing of your needles properly?

**BE SMART WITH SHARPS!**



## Focus on education programming:

- Public Education
- School Education
- Member Community customized education





# Mid Michigan Waste Authority

HERB "SONNY" GRUNWELL CHAIR  
FROM 2013 THROUGH 2019



- Downturn in Recycling Markets
- Agreed to continue curbside recycling with American Waste



Handle Customer Service issues



Landfill extension Moved to S Miller Road



Holiday Lights Graphic



One Day Hazardous  
Waste Drop Off Events

Katharine Tessin promoted to  
Administrative Director in 2015



Dual stream to single stream recycling

Earth Day at the Zoo



Consistent

- Consistent Member and Resident Experience
- Standardized language
- Track all calls





# Mid Michigan Waste Authority

**RUSS TAYLOR CHAIR AS OF 2020**



# RFP

- Released January
- Received 4 proposals February
- Months of review and interviews and meetings and negotiations
- Members choose from manual collection with Priority Waste (option for carts) or
- Carts with WM

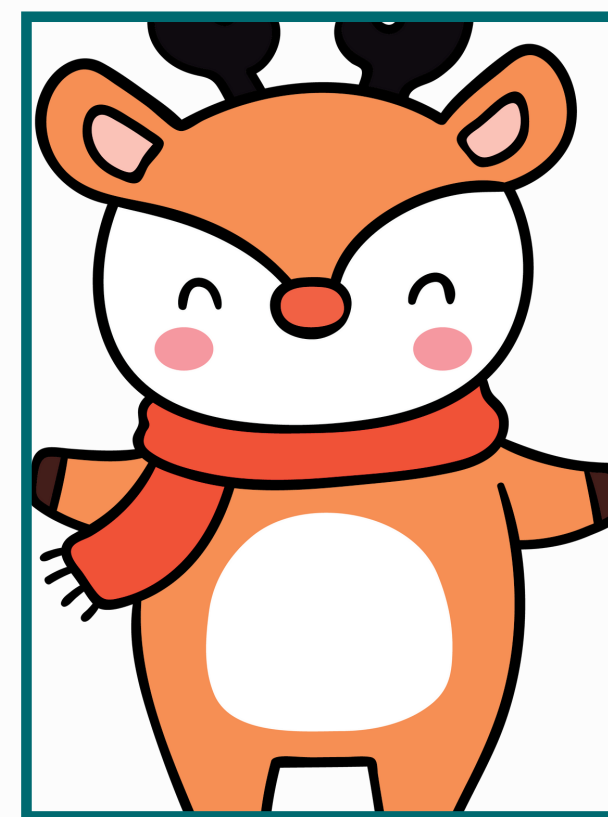
## GO TEAM!



**Katharine Tessin**  
**Administrative Director**  
**2015 to date**



**Syndi Thayer**  
**Assistant Administrative Director**  
**2021 to date**



**Marcy Johnson**  
**Customer Service Representative**  
**2006 to date**



**Amber Young**  
**Customer Service Representative**  
**2022 to date**





# Mid Michigan Waste Authority

*2023 AND BEYOND*



**New Hauler**



**Return of Public Drop Off**



**Carted Communities**



**Automated Waste Collection**